

# Bartlett Community Preschool

March 2016

P.O. Box 181 Bartlett, NH 03812 • 603-374-6803  
bcp@jbartlett.k12.nh.us



## Week of the Young Child:

The Week of the Young Child is Monday, April 11th – Friday, April 15th, 2015. This week is meant to celebrate our youngest learners, to work together in advocating for improving professional practice and working conditions in early childhood education, and to build public support for high-quality early childhood education programs.

Music Monday- The children will make instruments to sing and dance to music.

Teamwork Tuesday- The children will participate in various activities that will require team work such as relay races and group activities.

Waffle Wednesday- Families are invited to join us for a waffle breakfast from 8am-gam before we head off on our field trip to the Lorax.

Artsy Thursday- The children will spend the day making all different kinds of crafty creations!

Fairy Friday- We will begin working on our fairy houses for the Children's Museum and creating fairy wands!

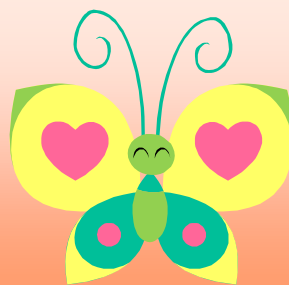


## Preschool News



### Dear Families:

We had a great March! We started the month by reading *The Three Little Pigs* and constructing different houses made of straw, sticks, and bricks. We worked together to create the perfect houses for the pigs. Working in teams helps us to develop our problem solving skills and strengthens our friendships. We have focused a lot on kindness and what it means to be a good friend. We were able to practice these skills by recreating and acting out parts of the stories. On St. Patrick's Day we had a Leprechaun visit our classroom while we were at Art. We had to use our best detective skills to search for all of the footprints around the classroom! We had a lot of different ideas about where he might have entered the classroom and how he left. Green water in the toilet led us to believe that was his escape route when he heard us walking down the hallway. We used more detective skills the next week when we did Easter egg letter hunts around the classroom. We all searched for eggs filled with letters and then worked together to match them to the letters on a chart. Letter recognition is a pre-literacy skill that is important for learning how to read.



## What We are Exploring:

The children have been taking a big interest in letters and their use. We have been doing a lot of letter activities such as alphabet bingo, name writing, and letter egg hunting. You can help your child learn letters too by talking about letters you see in the environment: on signs, buildings, and menus.

## March Rhymes

Cross Patch  
Cross patch, draw the latch,  
Sit by the fire and Spin.  
Take a cup, and drink it up.  
And call the neighbors in.



Lady Bug Lady Bug  
Ladybug, ladybug  
Fly away home,  
Your house is on fire  
And your children all gone;  
All except one  
And that's little Ann  
And she has crept under  
The warming pan.



## Important Events



- Friday, April 1<sup>st</sup> - April Fool's Day
- Monday, April 4<sup>th</sup> - Children's Museum
- Monday-Friday, April 11<sup>th</sup>-15<sup>th</sup> - Week of the Young Child (WOTYC)
- Wednesday, April 13<sup>th</sup> – Family Breakfast 8am-9am
- Wednesday, April 13<sup>th</sup> – 100 Acre Wood's Field Trip- The Lorax
- Thursday, April 14<sup>th</sup> – Tin mountain
- Thursday, April 14<sup>th</sup> - Unified Arts Festival
- Monday – Friday, April 18<sup>th</sup> – 22<sup>nd</sup> – JBES Vacation (Preschool- normal schedule)
- Friday, April 22<sup>nd</sup> – Earth Day
- Monday, May 2<sup>nd</sup> – Children's Museum
- Sunday, May 8<sup>th</sup> – Mother's Day

## Important Reminders

- JBES locks their doors between 9:00am-3:30pm. If you are dropping off or picking up during these times you must go through the front office.
- Please sign your child in/out at drop off/pick up
- Please call when child is going to be absent
- **DO NOT** send your child to school if they have a fever, vomited, or diarrhea in the past 24 hours. If your child is sent home with any of these symptoms they may not return until 24 hours after that symptom has gone.
- In the event school is closed due to weather related issues please listen to 93.5 FM, WMWV for cancellations and delays. I will also have a sheet for you to sign for one number that you would like to be placed on the JBES automated line for delays/closings due to weather related issues. This message is sent out quite early in the morning in order to give you plenty of time to plan for alternative care.

If there is a delayed start = a two hour delay BCP will open at 10:00am. If there is an early release BCP will close at 12:30pm.



*You and your child are important to us.*

Should you wish to share something good a teacher has done

or if you ever have a concern, please:

**Call: Ann Telephone: 603-374-6803 (For Emergencies only 603-991-8995)**



## Please Welcome Ms. Julia

Ms. Julia will be joining us as a member of the preschool team rather than a substitute. Please welcome her on board. Ms. Sara will not be returning in her former position, but will be occasionally subbing.

## Scholastic Book Orders

April book orders are out! If you would like to order books for your child please return your order form by Monday, April 11, 2016. If you prefer to order online you can use the code KJ6CY. Every book that is ordered earns us valuable points and free books! Thank you for your support.



## Summer Schedules:

If you have not yet signed your child up for our summer program and would like to please do so as soon as possible.



## Pick Up Reminder:

Please remember our full day program ends at 3:00pm. Please make sure your child is picked up no later than 3:15pm if you are signed up for the full day program. If you are going to be late please call. Thank you!